



We're getting started on North East Link

We're starting to build the missing link in Melbourne's freeway network.

North East Link will finally fix the missing link in Melbourne's freeway network. It will slash travel times between the M80 Ring Road and the Eastern Freeway by up to 35 minutes, take 15,000 trucks off local roads a day, and give local roads back to local communities.

The project will deliver a massive upgrade to the Eastern Freeway, Melbourne's first dedicated busway and more than 25 km of new and upgraded walking and cycling paths.

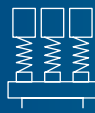
This year builders will be moving around 100 above and underground services out of the way of North East Link.

Power, water, gas, sewer and telecommunication services need to be moved to make way for major construction from 2021.

Key early works:



M80 Ring Road interchange
Telecommunication towers will be moved



Yallambie
A new power substation will be built next to Greensborough Road



Yallambie and Bulleen
Sewers will be moved



Watsonia Station
Two high voltage transmission towers will be moved



Borlase Reserve
Essential services and a water pressure reducing station will be moved

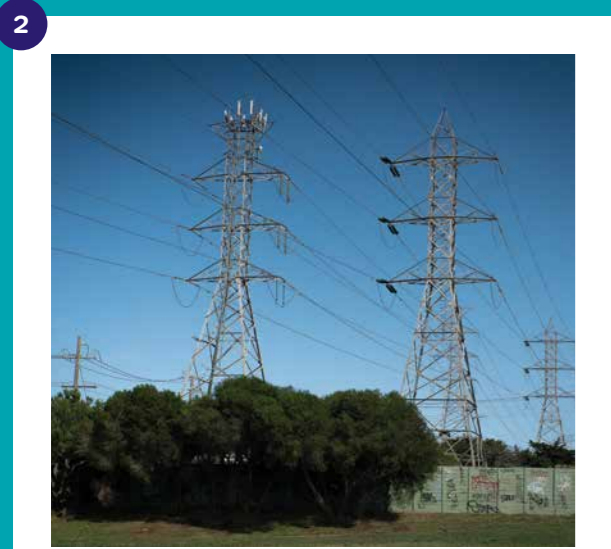


Greensborough Road
New gas, power and telecommunications lines will replace current services along Greensborough Road

Key early works activities

1

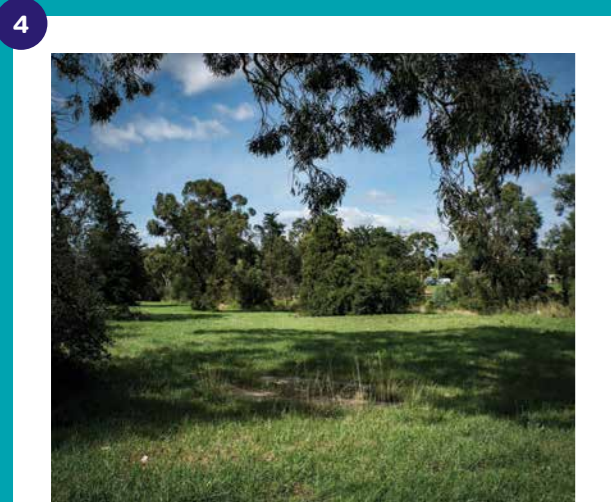
Telecommunication towers
Late 2020 - Early 2021
 Two mobile telecommunications towers near the M80 Ring Road and the Watsonia Station carpark will be moved a short distance from their current location.



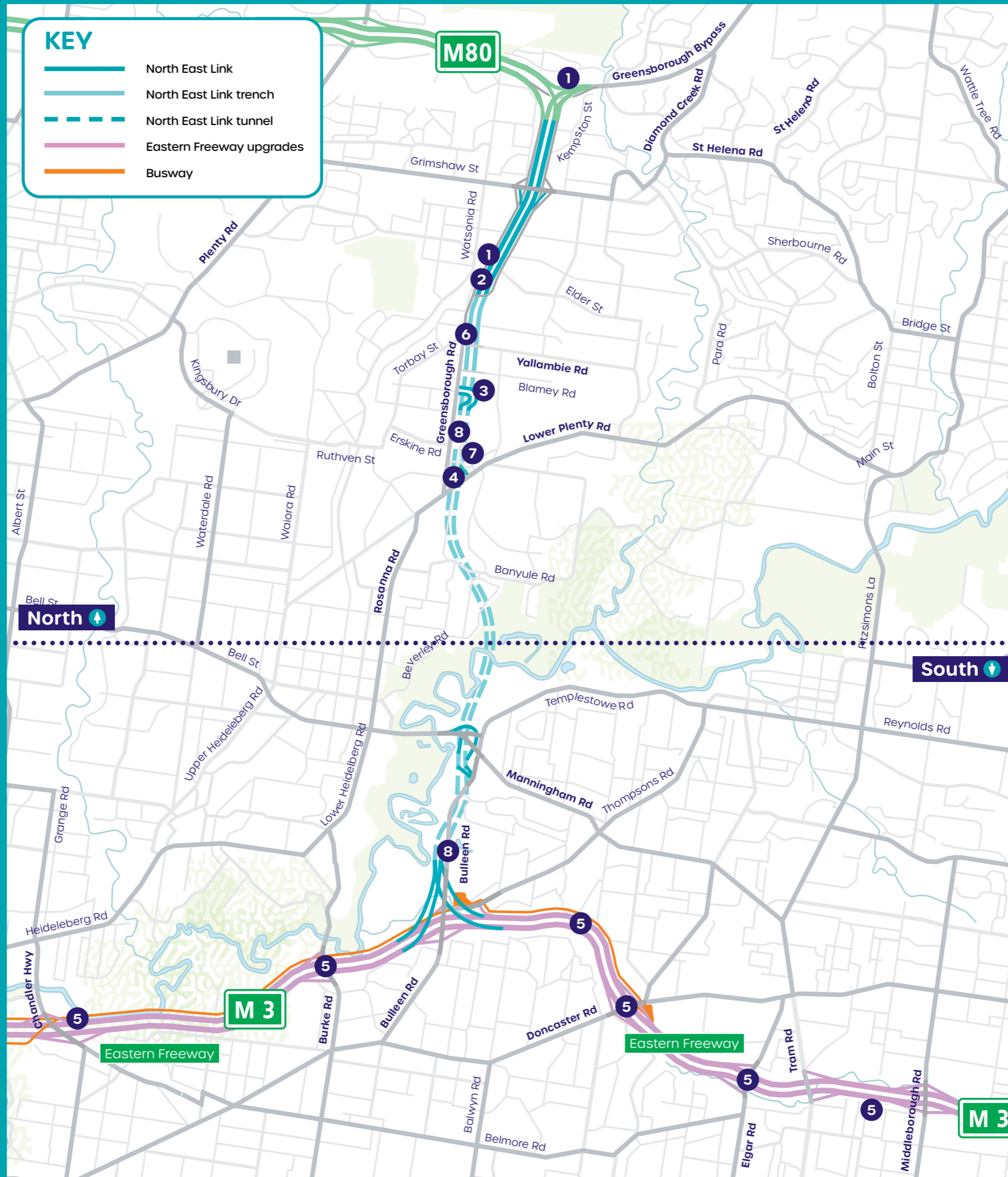
High-voltage transmission towers
Early 2021 - Mid 2021
 Two high-voltage transmission towers in Watsonia Station carpark will be moved to the easement on the other side of Greensborough Road.

3

New power substation
Early 2021 - Early 2022
 A new power substation will be built near Blamey Road to supply power to the tunnel boring machines during construction and when North East Link opens.

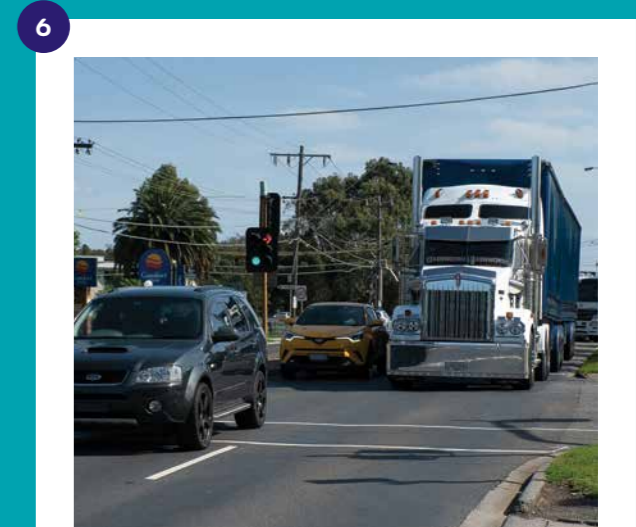


Borlase Reserve utilities
Mid 2020 - Late 2020
 Above and below ground power, water, gas, sewer and telecommunications lines will be moved. A temporary site compound will be built to manage the works and provide a safe environment for workers.



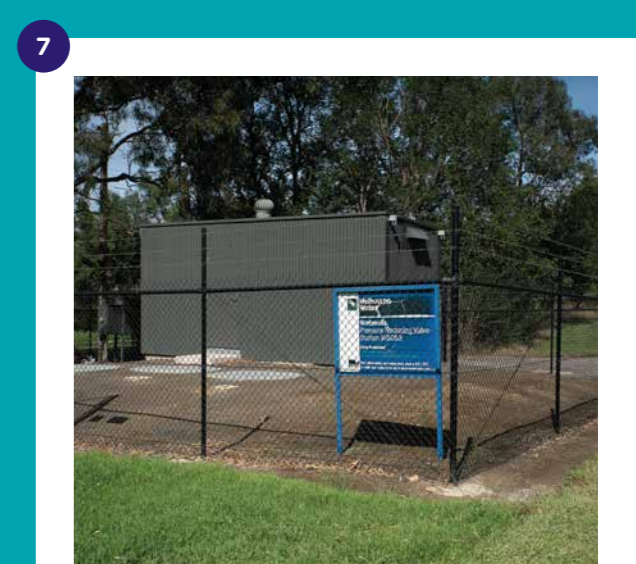
5

Eastern Freeway service relocations
Mid 2020 - Mid 2021
 To allow for upgrades to the Eastern Freeway, above and below ground power lines, communication assets and water mains will be moved.



6

Greensborough Road
Mid 2020 - Early 2021
 New gas, power and telecommunications lines will replace existing services along the length of Greensborough Road. To keep traffic moving and complete works safely, we'll be making some temporary changes to the alignment of the road.



7

Water pressure reducing station
Mid 2020 - Late 2020
 The water pressure reducing station (PRS) on the corner of Borlase and Drysdale Streets (shown in the image) will be moved to ensure the continued safe supply of water to homes and businesses.

8

Sewer realignments
Mid 2020
 Underground sewer lines up to two metres wide in Yallambie and Bulleen will be moved.

Questions and Answers

What are early works?

Early works will clear the way for major works to start in 2021. This year we'll be:

- moving power, water, gas, sewer and telecommunications lines
- building new services such as power to help build and operate North East Link.

Who is delivering the early works program?

CPB Contractors have been appointed to deliver the early works.

Why are early works needed?

To get ready to build North East Link and make sure we can start quickly and minimise disruptions, we need to move services and utilities out of the way.

How will you manage impacts on the community?

Before works start, we'll speak with residents and businesses about what works are planned in their area, what to expect and how any disruptions will be managed.

Strict requirements will be in place to manage construction impacts, including noise, dust and vibration.

For more information about the North East Link Project's Environmental Performance Requirements (EPRs), visit our website.

When will early works start and finish?

Work will start in the first half of 2020 and is expected to be completed in 2021 ready for major construction to start.

How many utilities will you relocate?

Approximately 100 utility services will be moved. These include key assets such as:

- power, water, gas, sewer and telecommunications lines
- mobile telecommunications towers
- high-voltage transmission towers
- a water pressure reducing station in Yallambie.

Will my travel be affected by early works?

While disruptions to get this massive project built are unavoidable, we know that through careful planning and consultation with communities we can manage this well.

There will be some disruptions for roads and streets in and around the project area. We are committed to providing you with enough notice so that you can plan your journey and allow for extra travel time if needed.

Up to date information on travel disruptions can be found at northeastlink.vic.gov.au

How do I speak to someone about the works?

You can contact a member of the project team, 24 hours a day, 7 days a week by calling 1800 105 105.

What happens after early works?

While early works are happening, teams of some of the world's best and biggest builders are preparing bids to design the entire project and build the North East Link tunnels. The preferred team, design and construction timelines will be known later this year. Early works are expected to be finished by early 2021, ready for major works to start soon after.

How do I stay up to date?

To receive regular updates on the North East Link Project, register your details at northeastlink.vic.gov.au/contact/subscribe

You can also follow us on social media:



North East Link fast facts



Up to 35 minute faster trips between the Ring Road and the Eastern Freeway



15,000 trucks off local roads a day



More than 10,000 new jobs

Contact us

community@northeastlink.vic.gov.au
1800 105 105
northeastlink.vic.gov.au
North East Link Project
GPO Box 4509, Melbourne VIC 3001



Translation service -
For languages other than English,
please call 03 9209 0147

Please contact us if you would like this information in an accessible format.

If you need assistance because of a hearing or speech impairment, please visit relayservice.gov.au



Authorised and published by the Victorian Government, 1 Treasury Place, Melbourne